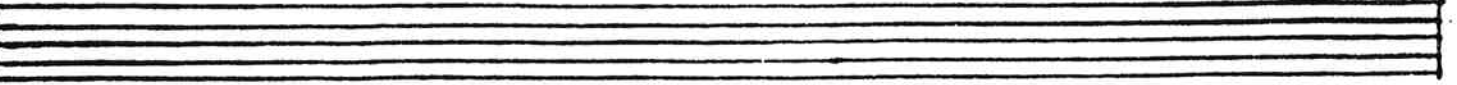
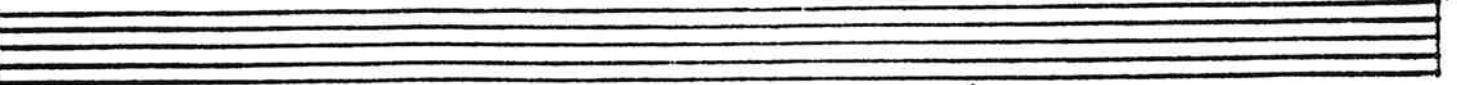
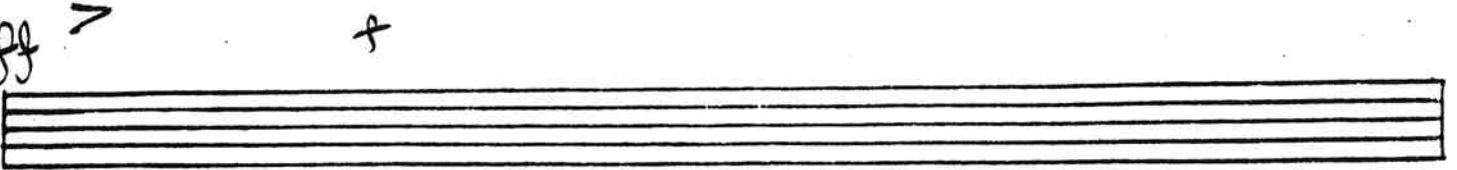
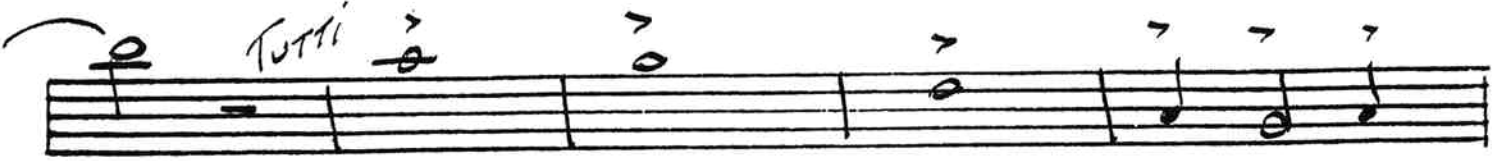
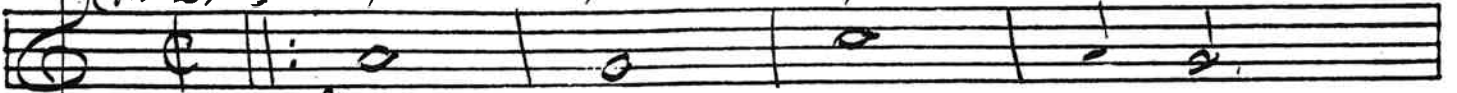


This Is My Country

MAJESTICALLY

(IN 2)



LOCAL 586, A.F.M.
 Arrangers & Copyists
 No. 66 Date 4/25/94
 Name FRANK BRIDGE

This Is My Country

Handwritten musical score for Alto 2. The score consists of ten staves. The first staff begins with a treble clef, a common time signature (C), and a repeat sign. The music is written in a simple, melodic style with various dynamics and articulations. Key markings include:

- Staff 3:** *Soli* marking above the staff.
- Staff 5:** *Tutti* marking above the staff.
- Staff 6:** *mf* marking above the staff.
- Staff 7:** *ff* marking below the staff, followed by *f* marking below the staff.
- Staff 8:** *cresc.* marking below the staff.

The score includes various musical notations such as notes, rests, beams, and slurs. There are also some handwritten annotations like "1." and "2." above notes in the second staff, and a wavy line at the end of the eighth staff.

LOCAL 586, A.F.M.
 Arrangers & Copyists
 No. 66 Date 4/26/94
 Name FRANK BRIDFE

This Is My Country

Handwritten musical score for 'This Is My Country' for Men 1. The score consists of ten staves of music. The first staff begins with a treble clef, a common time signature, and a key signature of one flat. The music features various note values, rests, and dynamic markings such as 'f' and 'ff'. Performance directions include '1.', '2.', 'Soli', and 'Tutti'. A 'Cresc.' (crescendo) marking is present at the bottom of the seventh staff. The score concludes with three empty staves.

This Is My Country

Handwritten musical score for 'This Is My Country'. The score consists of ten staves. The first staff is a treble clef with a key signature of one flat (B-flat) and a common time signature (C). The music features various rhythmic values, including eighth and sixteenth notes, and rests. There are several dynamic markings: *f* (forte) at the beginning, *sol* (solo) in the third staff, *mp* (mezzo-piano) in the fifth staff, and *ff* (fortissimo) and *f* in the sixth staff. A *cresc.* (crescendo) marking is written below the sixth staff. The score includes first and second endings, indicated by '1.' and '2.' above the staves. There are also some handwritten annotations like 'Tutti' and 'mp' above notes. The bottom three staves are empty.

THIS IS MY COUNTRY

Handwritten musical score for Baritone (BARI) titled "THIS IS MY COUNTRY". The score is written on ten staves. The first staff begins with a treble clef and a common time signature (C). The music includes various dynamics such as *f*, *sim.*, *sol.*, *mf*, *ff*, and *f*, as well as performance directions like *TUTTI* and *CRESC.*. The score features a variety of note values, including quarter, eighth, and sixteenth notes, along with rests and slurs. The piece concludes with a double bar line and a fermata on the final note. The bottom three staves are empty.

LOCAL 586, A.F.M.
 Arrangers & Copyists
 No. 66 Date 4/26/94
 Name FRANK BRIDGE

This Is My Country

Handwritten musical notation for the first system, including a treble clef, a key signature of one flat, and a 4/4 time signature. The notation features a series of notes with accents and dynamic markings such as *f* and *ff*. A first ending bracket is present over the final two measures of the system.

Handwritten musical notation for the second system, starting with a second ending bracket labeled "2." followed by a series of notes and rests.

Handwritten musical notation for the third system, beginning with the word "Tutti" written above the staff, followed by notes and rests.

Handwritten musical notation for the fourth system, featuring notes with accents and dynamic markings like *f*.

Handwritten musical notation for the fifth system, including notes with a sharp sign and dynamic markings such as *ff* and *f*. The word "Cresc." is written above the staff with a dashed line indicating a crescendo.

A set of empty musical staves with dynamic markings *ff* and *f* written below the first staff.

A set of empty musical staves.

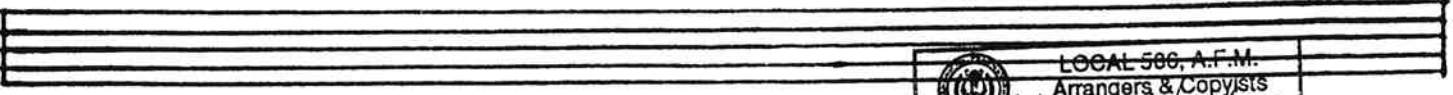
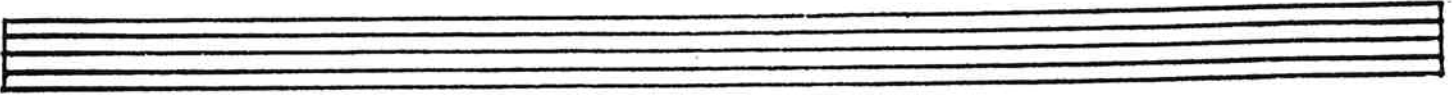
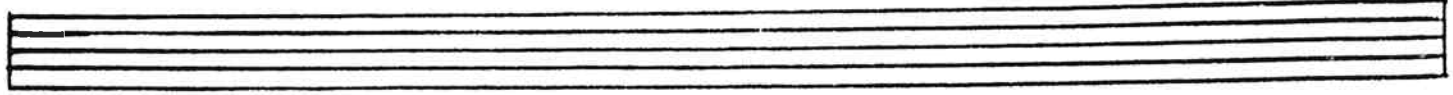
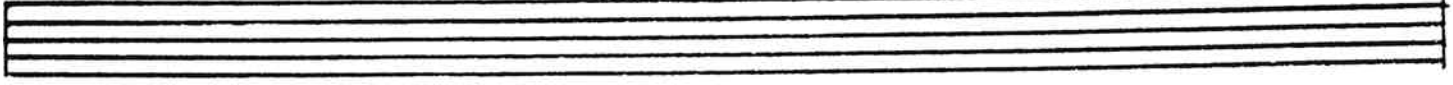
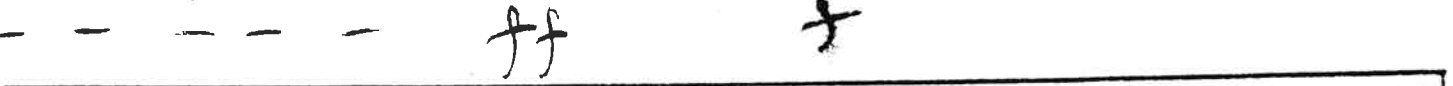
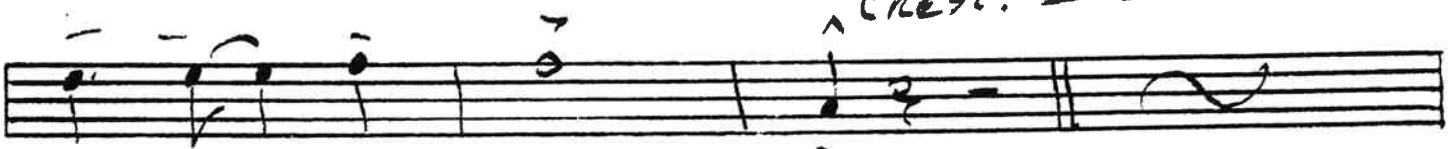
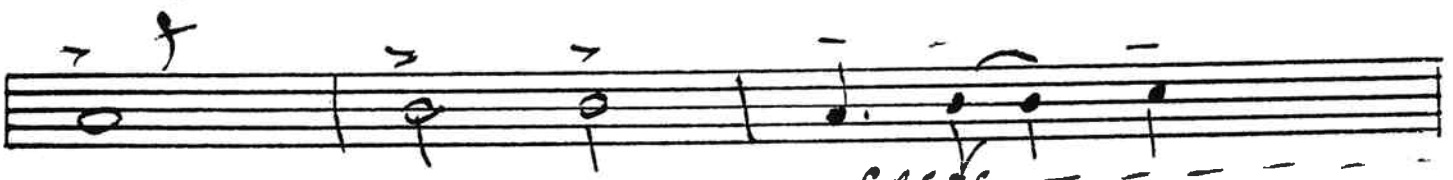
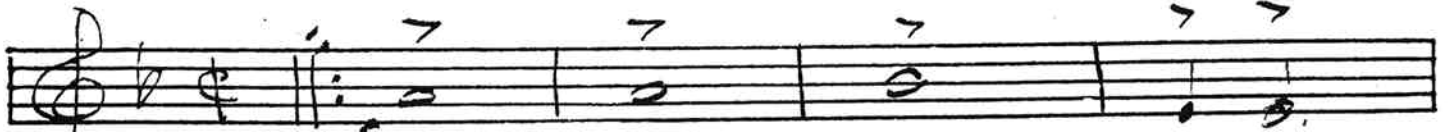
A set of empty musical staves.


A set of empty musical staves.

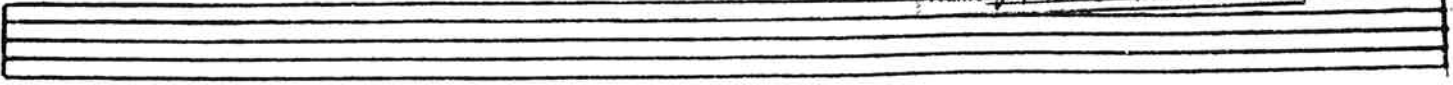
A set of empty musical staves.

LOCAL 586, A.F.M.
 Arrangers & Copyists
 No. 66 Date 4/26/94
 Name FRANK BRIDGE

This Is My Country




 LOCAL 500, A.F.M.
 Arrangers & Copyists
 No. 66 Date 7/26/99
 Name FRANK BRIDGE



This Is My Country

UNIS.

Handwritten musical score for 'This Is My Country' in bass clef, 4/4 time. The score consists of 11 staves. The first staff begins with a treble clef and a key signature of two flats (B-flat and E-flat). The music features various chords, including triads and dyads, with many notes marked with accents (>). A first ending bracket is present in the second staff, and a second ending bracket is in the third staff. The fourth staff contains a whole rest. The fifth staff begins with a key signature change to one flat (B-flat). The sixth staff contains a whole rest. The seventh staff contains a whole rest. The eighth staff contains a whole rest. The ninth staff contains a whole rest. The tenth staff contains a whole rest. The eleventh staff contains a whole rest.

CRES. - - - - - *ff*

LOCAL 580, A.F.M.
 Arrangers & Copyists
 No. 66 Date 9/26/94
 Name FRANK BRIDLE

This is My Country

UNIS. *f*

cresc.

ff *f*

LOCAL 586, A.F.M.
 Arrangers & Copyists
 No. 66 Date 4/26/94
 Name FRANK BRIDGE

This is My Country

UNIS.

cresc. - - - - - ff

LOCAL 983, A.F.M.
 Arrangers & Copyists
 No. 66 Date 9/26/94
 Name FRANK BRIDGE

THIS IS MY COUNTRY

"MAJESTICALLY"

2 BEAT

Handwritten musical notation on a five-line staff. It begins with a common time signature 'C'. The notation consists of rhythmic slashes and vertical stems. Above the staff, there are markings: a quarter note with a sharp sign, and a group of three eighth notes with stems. The staff contains several measures of rhythmic notation.

Handwritten musical notation on a five-line staff. It starts with a first ending bracket labeled '1.'. The notation includes rhythmic slashes and stems. Above the staff, there are markings: a quarter note with a sharp sign, and a group of three eighth notes with stems. The staff contains several measures of rhythmic notation.

Handwritten musical notation on a five-line staff. It starts with a third ending bracket labeled '3'. Above the staff, there is a marking: a quarter note with a sharp sign. The word 'REEDS' is written above the staff. The notation consists of rhythmic slashes and stems.

Handwritten musical notation on a five-line staff. The notation includes rhythmic slashes and stems. Above the staff, there are markings: a quarter note with a sharp sign, and a group of three eighth notes with stems. The staff contains several measures of rhythmic notation.

Handwritten musical notation on a five-line staff. The notation includes rhythmic slashes and stems. Above the staff, there are markings: a quarter note with a sharp sign, and a group of three eighth notes with stems. The staff contains several measures of rhythmic notation.

Handwritten musical notation on a five-line staff. The notation includes rhythmic slashes and stems. Above the staff, there are markings: a quarter note with a sharp sign, and a group of three eighth notes with stems. The staff contains several measures of rhythmic notation.

CRESC. ----- ff f

Empty five-line musical staff.

Empty five-line musical staff.

Empty five-line musical staff.

Empty five-line musical staff.

LOCAL 586, A.F.M.
 Arrangers & Copyists
 No. 66 Date 4/26/94
 Name FRANK BRIDGE

Empty five-line musical staff.

This Is My Country

Words by
DON RAYE

Music by
AL JACOBS



rall.

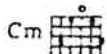
Voice (*Rubato*)

What diff-rence if I hail from North or South, or from the East or West? — My
 With hand up - on my heart I thank the Lord for this, my na - tive Land, — For

heart is filled with love for all of these. — I on - ly know I swell with pride, and
 all I love is here with - in her gates. — My soul is root - ed deep - ly in the

deep with - in my breast I thrill to see 'Old Glo - ry' paint the breeze!
 soil on which I stand, For these are mine, My own U - nit - ed States!

poco rall.



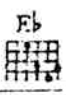





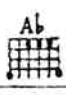
Chorus (*In spirited tempo*)

THIS IS MY COUN-TRY! Land Land of my my
 Land Land of my my

Cm 
 Fm7 
 Bb7 
 Eb 
 Cm 
 Fm7 
 Bb7 


birth choice _____ THIS IS MY COUN-TRY!



Eb 
 Cm 
 F# 
 Fm7 
 Bb7 
 Eb7 
 Ab 

Grand est on earth! I pledge thee my al-
 Hear my proud voice!



Eb 
 Ab 
 Fm7 
 Bb 
 Bb7 

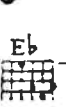

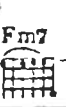

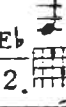


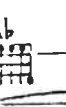
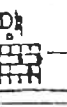
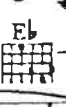
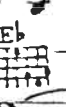
le - giance, A - mer - i - ca the bold. For



Eb 
 Cm 
 Fm7 
 Bb7 
 Eb 
 Fm7 
 Bb7 

THIS IS MY COUN-TRY, To have and to



1. Eb 
 Bbdim 
 Fm7 
 Bb9 
 2. Eb 
 Fm 
 Gm 
 Ab 
 D# 
 Eb 
 Eb 

hold! hold!

